

SCENARIO 1

- SINGLE FUNCTION
- MAX. 300 PEOPLE
- KITCHEN AND BAR ACCESS
- DIRECT TOILET ACCESS
- ENTRY FROM 3 SIDES

SCENARIO 2

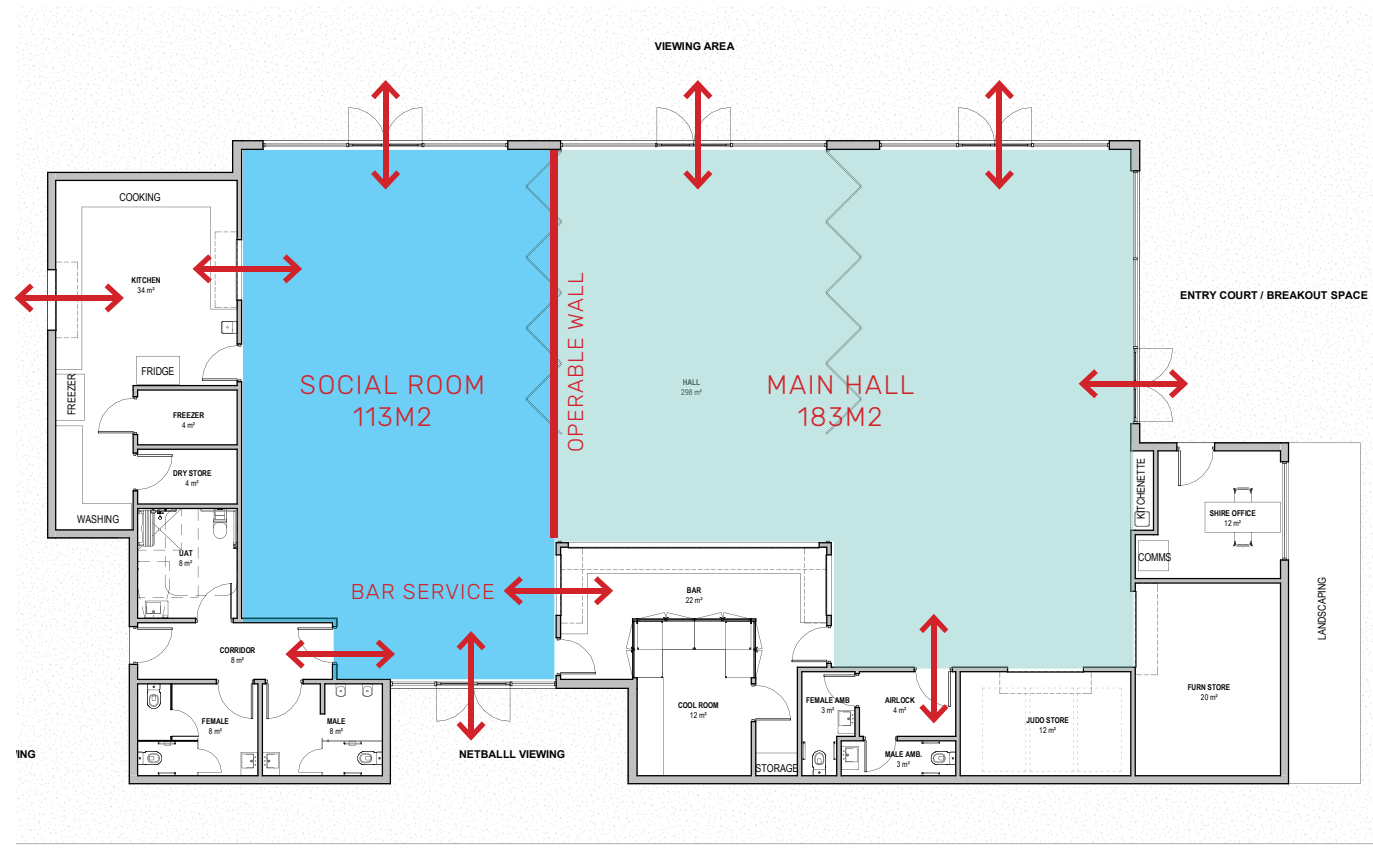
- 2 CONCURRENT FUNCTIONS
- FUNCTION 1
 - MAX. 198 PEOPLE
 - NO KITCHEN OR BAR ACCESS
 - TOILET ACCESS VIA EXTERNAL VERANDA
 - ENTRY FROM SOUTH AND EAST
- FUNCTION 2
 - MAX. 102 PEOPLE
 - KITCHEN AND BAR ACCESS
 - DIRECT TOILET ACCESS
 - ENTRY FROM NORTH AND EAST

SCENARIO 3

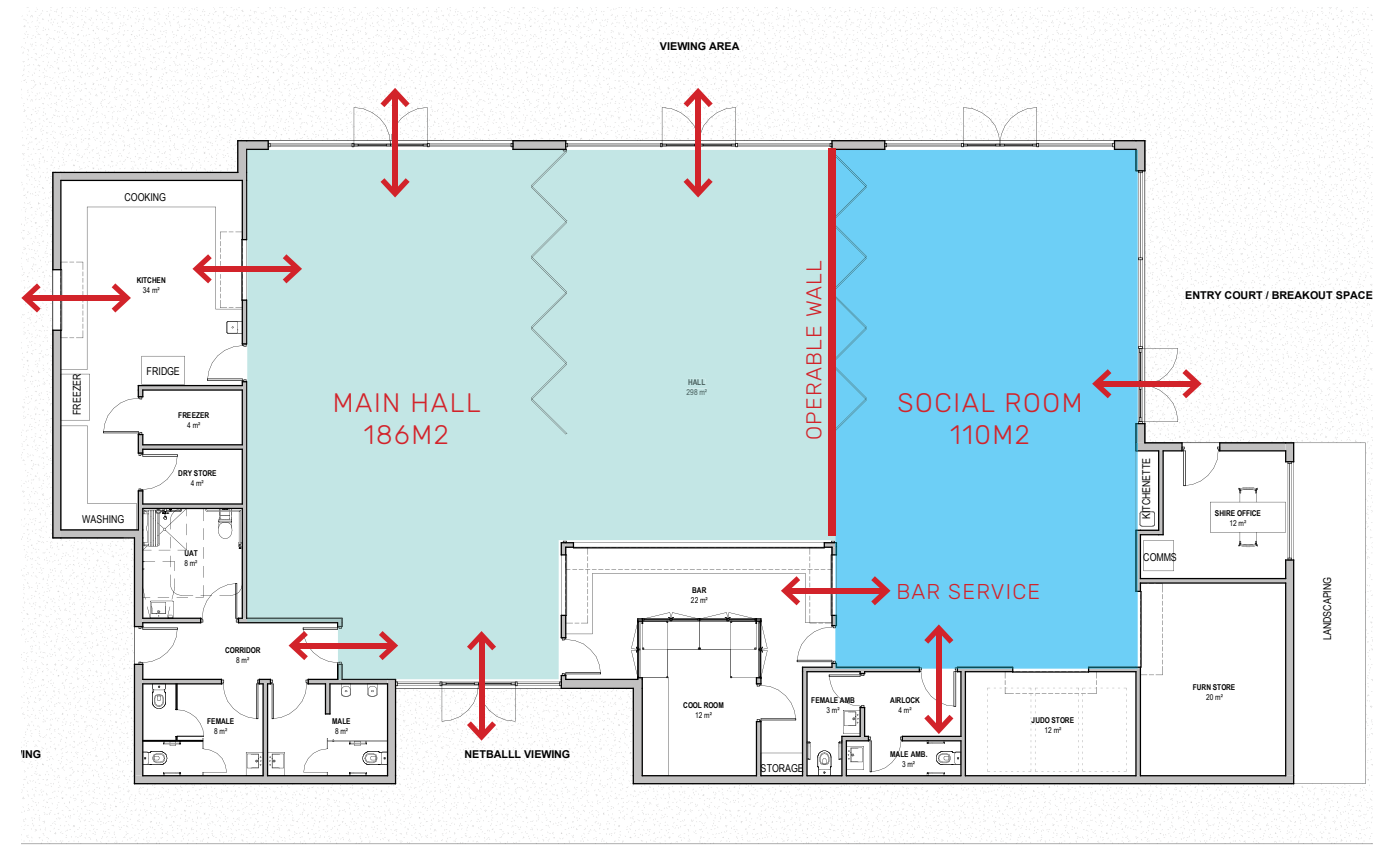
- 2 CONCURRENT FUNCTIONS
- FUNCTION 1
 - MAX. 102 PEOPLE
 - BAR ACCESS
 - NO KITCHEN ACCESS
 - TOILET ACCESS VIA EXTERNAL VERANDA
 - ENTRY FROM SOUTH AND EAST
- FUNCTION 2
 - MAX. 198 PEOPLE
 - KITCHEN ACCESS
 - NO BAR ACCESS
 - DIRECT TOILET ACCESS
 - ENTRY FROM NORTH AND EAST

SCENARIO 4

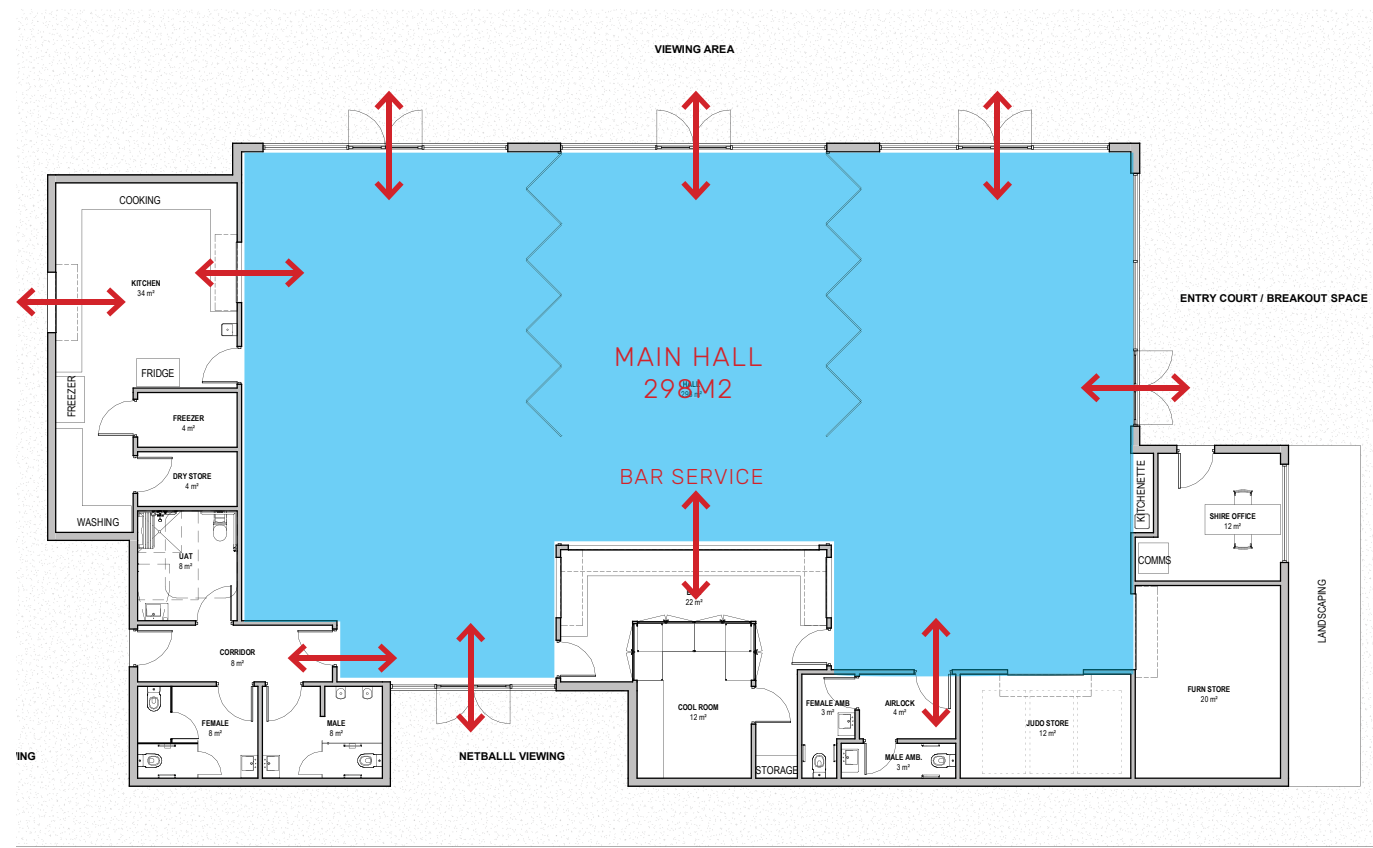
- 3 CONCURRENT FUNCTIONS
- FUNCTION 1
 - MAX. 102 PEOPLE
 - BAR AND KITCHEN ACCESS
 - TOILET ACCESS VIA EXTERNAL VERANDA
 - ENTRY FROM SOUTH AND EAST
- FUNCTION 2
 - MAX. 95 PEOPLE
 - NO KITCHEN AND BAR ACCESS
 - TOILET ACCESS VIA EXTERNAL VERANDA
 - ENTRY FROM EAST
- FUNCTION 3
 - MAX. 102 PEOPLE
 - KITCHEN AND BAR ACCESS
 - DIRECT TOILET ACCESS
 - ENTRY FROM NORTH AND EAST



SCENARIO 1



SCENARIO 2



SCENARIO 3

LEGEND

- LICENCED AREA
- NON-LICENCED AREA

1.2 FUNCTION ARRANGEMENTS

28/09/21

REV C

Muceha Recreation Centre - Demolish and replace budget

Item	Details	Comments	GST EX	TOTALS
Demolition of existing building	500m2 x \$100 pm2		\$ 60,000.00	
Cleanup of site	Plus \$10,000 for asbestos		\$ 10,000.00	
15% contingency			\$ 10,500.00	
			\$ 80,500.00	\$ 80,500.00

ALTUS CONCEPT COST PLAN R2

Total estimated construction cost	\$ 2,843,520.00
Less 60m2	-\$ 180,000.00
ITEMS NOT INCLUDED IN BUDGET	

Hardstand	\$ 25,000.00
Shed	\$ 26,000.00
Netball Court fence	\$ 25,000.00
Netball lights	\$ 23,000.00
Bore Decommission	\$ 5,000.00
Architects	\$ 200,000.00
	\$ 2,967,520.00

Contingency	\$ 100,000.00
Total estimate	\$ 3,067,520.00

LIKELY SAVINGS

Aircons and Kitchen appliances	\$ 90,000.00
Earthworks	\$ 26,450.00
Waste Water watering area	\$ 50,000.00
Potable water treatment	\$ 20,000.00
Reduce size of meeting room to 250m2	\$ 150,000.00
Savings due to Architectural design to be advised	
	\$ 336,450.00