



Thank you to our Fantastic Sponsors!

Pay your rates in full by **24 August 2023** for your chance to win one of these amazing prizes!



\$1,000 CASH PRIZE



West Australian Symphony Orchestra
\$216—2 x A-Reserve tickets



\$170 VALUE



Quality HOTEL Ambassador Perth
\$580 - 2 night stay with Complimentary breakfast



HEAVY DIESEL MOBILE MAINTENANCE
MOBILE RYD HYDRAULIC HOSES/FITTINGS
ON BOARD JALTEBY DIAGNOSTICS ON & OFF HWY
LICENSED LOGBOOK SERVICES FOR HME
AIR CONDITIONING REPAIRS/REGAS
SERVICING THE CHITTERING VALLEY & WHEATBELT REGION

Valued at **\$727** Milwaukee Leaf Blower with Battery and Charger Pack



BANK LOCAL
Your town. Your bank. Everything you need.

\$500



BINDOON HILL GRAVEL SUPPLY
12 tonne load
25mm gravel

CSM
CHITTERING SMALL MOTORS
Chainsaws, trimmers, mowers, quads and much more!
Brendan: 0856 227 085
\$100 Voucher

\$300 CASH



Quoting, New installs, Maintenance, Upgrades, Emergency Call Outs, Trenching, Cable scanning, Engage/Arrest, Leak detection



\$50 Voucher



\$100 Meat Pack



Edmund Rice College Stronger Together
\$200 Voucher



\$150 Gift Card



\$50 Voucher



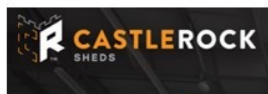
5% Storewide Discount



AUSTRALIAN PREMIUM FEEDS PTY LTD
feed for the future
\$200 Instore Voucher



\$100 GIFT VOUCHER



\$200 Voucher



\$200 Value



\$550 Voucher



\$100 Meat Pack



Residential Dwelling Pest Treatment
Value **\$250**



Free TF40J Pressure Pump
Valued at **\$380**



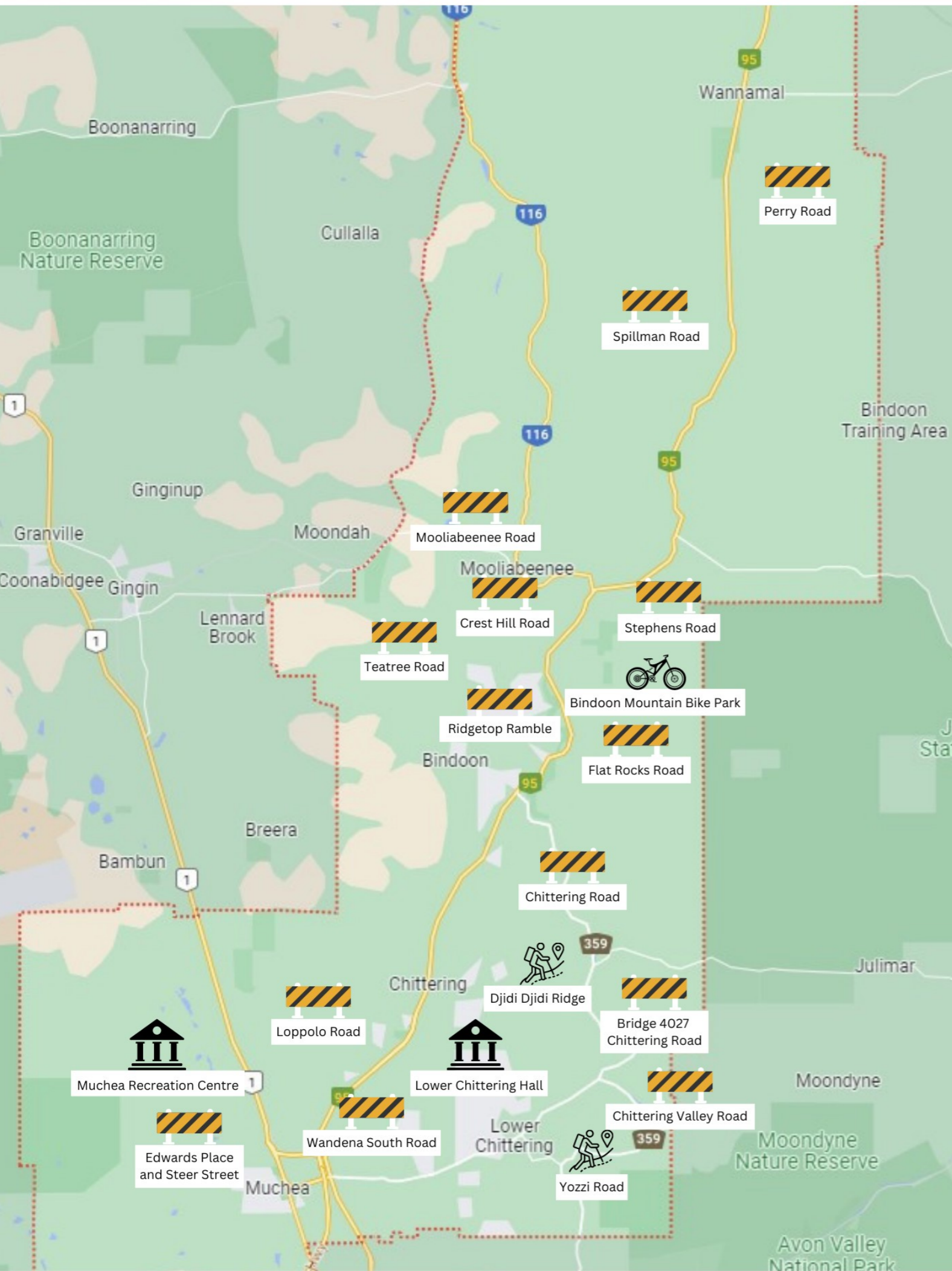
5 x Safety Compliance Checks
\$200 Value

Prosperous and diverse rural communities living in harmony with nature



2023 - 2024 Rates Brochure

Budget—Projects Highlights



Quick facts about Chittering



Community

S1.1 An Active Community

- Taste of Chittering
- Youth Krew
- Australia Day & Citizenship Ceremony
- Anzac Day
- Thank a Volunteer Day
- Fire Brigade Recognition Event
- Shire-wide club development workshops
- Localised community events
- Community Bus Program
- Volunteering Program
- Developing the Reconciliation Action Plan

S1.2 A Safe and Healthy Community

- Implementing the Shire's Youth Services Programs
- Implementing the Shire's Aged Services Programs
- Accessible Events Checklist
- Bindoon Public Library
- Bush Fire Brigades
- Annual Maintenance Program

Natural Environment

S2.1 Sustainable Lifestyle

- Containers for Change
- Strategic Waste Management Plan
- Bindoon Landfill site upgrades
- Muchea :Landfill

S2.2 Environmental Protection

- Bushfire Risk Management Plan
- Strategic Firebreaks Plan

Built Environment

S3.1 Retaining Rural Amenity

- Building Permit Applications
- Local Biodiversity Strategy
- Local Planning Strategy
- Economic Development Strategy

S3.2 Improving Infrastructure

- Road Maintenance and Capital Upgrades
- Blackspot Improvements - Julimar Road and Muchea Road South
- Trees for Residents Programs

Leadership

S5.1 An Engaged Shire

- Planned community and stakeholder engagement
- Installing four Community Noticeboards
- Community Engagement Framework

S5.2 Accountable and Transparent Governance

- Council Members

Council adopted an overall Rate in the Dollar increase of 3%

	2022 - 2023	2023—2024
UV%	0.5903	0.6080
GRV%	11.115	11.4484

Individual rate increased or decreases will fluctuate due to variations in property valuations.

Economy

S4.1 Economic Growth

- Shop Local Campaign
- Northern Growth Alliance Membership
- Advocacy for Sewerage

S4.2 Accountable and Transparent Governance

- Local Jobs Portal
- Competitive Grant Program
- Small Business Friendly Approvals Program

S4.3 Increase Visitors

- Tourism Action Plan
- Tourism Marketing
- Capital Projects

We are maintaining a local supplier list. If you are a local business, please register your interest by email: chatter@chittering.wa.gov.au

MAJOR CAPITAL PROJECTS IN THIS BUDGET

Muchea Recreation Centre

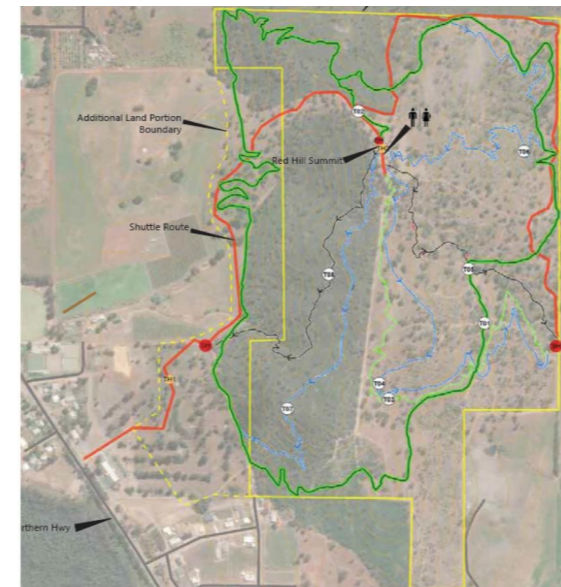


Long awaited development of clubrooms, providing new change rooms, as well as replacing the hall with a multi-purpose facility.

The opening of the Muchea Recreation Centre will be officially opened in late 2023.

Full detail is available on the Shire website under the Projects tab.

Bindoon Mountain Bike and Adventure Park



The Stage 1 Trails of the Bindoon Mountain Bike Park are nearly completed. These trails will enable access to the area for community members who wish to use the facility for walking or mountain-biking.

Three Chillies Design, has been engaged for the Stage 2 trail designs.

Signage, ablution facilities and other aspects are in the process of being organised and a project reference group has been established through Council.

The Shire of Chittering has funded Stage 1 of the Mountain Bike Park, with assistance from the Chittering Tourist Association, Chalice Mining, Bendigo Community Bank, Bindoon and Caspin Resources.

Full detail is available on the shire website under the Projects tab.

Lower Chittering Community Centre



In 2023/24 we will continue the Lower Chittering Community Centre project by engaging an architect to create the final architectural design plans for Stage 1 of the new centre. These plans will be developed with input from the Lower Chittering Hall Replacement Reference Group, which includes members of the community, and users of the existing hall. The plans will allow us to tender the construction of the facility.

Funding sources for the project are being investigated, and a historical project for the Lower Chittering Hall will be undertaken to assist with recognising the past and determining the future of the current building and grounds.