

POWER LEGEND

- SITE MAIN SWITCHBOARD
- DISTRIBUTION BOARD
- SINGLE SWITCHED SOCKET OUTLET
- DOUBLE SWITCHED SOCKET OUTLET
- 15A SWITCHED SOCKET OUTLET
- CLEANERS OUTLET, ENGRAVED "CLEANERS USE ONLY"
- PENDANT SWITCHED SOCKET OUTLET MOUNTED AT 1700AFF UOS.
- DOUBLE SOCKET OUTLET WITH INTEGRAL DUAL USB CHARGING OUTLET
- DOUBLE GENERAL PURPOSE SOCKET OUTLET (SURGE PROTECTED)
- CLIPSAL 56-SERIES SWITCHED SOCKET OUTLET (LOCKABLE)
- SINGLE PHASE IP65 ISOLATOR MOUNTED ADJACENT TO THE EQUIPMENT
- THREE PHASE IP65 ISOLATOR MOUNTED ADJACENT TO THE EQUIPMENT
- HAND DRYER WITH DIRECT CONNECTION & ISOLATOR LOCATED @ AFFL 2000
- INSECT KILLER
- UNDERGROUND POWER CONDUIT
- UNDERGROUND TELSTRA CONDUIT
- UNDERGROUND COMMUNICATIONS CONDUIT
- EXISTING UNDERGROUND POWER CONDUIT
- EXISTING UNDERGROUND COMMUNICATIONS CONDUIT
- INDICATES QUANTITY & DIAMETER OF POWER CONDUIT
"H" DENOTES QUANTITY OF CONDUITS
"x" DENOTES CONDUIT DIAMETER (mm)
- INDICATES QUANTITY & DIAMETER OF COMMUNICATIONS CONDUIT
"H" DENOTES QUANTITY OF CONDUITS
"x" DENOTES CONDUIT DIAMETER (mm)
- INDICATES QUANTITY & DIAMETER OF TELSTRA CONDUIT
"H" DENOTES QUANTITY OF CONDUITS
"x" DENOTES CONDUIT DIAMETER (mm)
- DENOTES CONDUIT CAPPED OFF UNDERGROUND
- CABLE CONTAINMENT RISES/DROPS
- ELECTRICAL CABLE PIT
- TELSTRA CABLE PIT
- EARTH PIT
- COMMUNICATIONS CABLE PIT

COMMUNICATIONS LEGEND

- COMMUNICATIONS RACK
- SINGLE CAT6 RJ45, TELECOMMUNICATIONS OUTLET MOUNTED AT 400AFF UOS
- CAT6 RJ45, TELECOMMUNICATIONS OUTLET MOUNTED AT 400AFF UOS.
"n" DENOTES NUMBER OF OUTLETS TO EACH WALL PLATE
- CEILING MOUNTED CAT6 RJ45 DATA OUTLET FOR WIRELESS ACCESS POINT

LIGHTING LEGEND

(REFER TO THE SPECIFICATION FOR REQUIREMENTS)

- SURFACE MOUNTED LUMINAIRE - 600mm
- SURFACE MOUNTED LUMINAIRE - 1200mm
- RECESSED LUMINAIRE - 600x300mm
- RECESSED LUMINAIRE - 1200x300mm
- CONTINUOUS LIGHTING SYSTEM
- RECESSED CIRCULAR DOWNLIGHT
- WALL MOUNTED LUMINAIRE
- SINGLE POLE MOUNTED LUMINAIRE
- DOUBLE POLE MOUNTED LUMINAIRE
- SPOTLIGHT OR FLOODLIGHT
- RECESSED EMERGENCY LUMINAIRE
- EXIT SIGN (DS DENOTES DOUBLE SIDED)
- DIRECTIONAL EXIT SIGN (DS DENOTES DOUBLE SIDED)
- WALL MOUNTING BRACKET
- CONNECTION TO FEATURE/DISPLAY LIGHTING

SWITCHING LEGEND

- SINGLE SWITCH (MOUNTED 1100AFF) & SWITCH WIRE
"n" DENOTES NUMBER OF SWITCH GANGS PER SWITCH PLATE
- TWO-WAY SWITCH MOUNTED 1100AFF
- MOTION SENSOR - REFER SPECIFICATION
- SLAVE MOTION SENSOR TYPE M1 - REFER SPECIFICATION
- MOTION SENSOR - TWO CHANNEL - REFER SPECIFICATION
- LIGHT SWITCH PANEL
- DENOTES SWITCHING CONNECTION
- DENOTES SWITCHING CROSSOVER
- TO SEPARATE SWITCH ON LIGHT SWITCH PANEL
- DENOTES LCS LIGHTING CONTROL STRATEGY No.1

SMATV LEGEND

- FREE TO AIR TELEVISION OUTLET

SECURITY LEGEND

- CLOSED CIRCUIT TELEVISION SYSTEM NETWORK VIDEO RECORDER
- CCTV MONITOR
- ELECTRIC LOCK.
- MAGNETIC LOCK.
- CCTV CAMERA - SURFACE MOUNTED DOME
- POLE MOUNTED CCTV CAMERA
- CARD READER
- EGRESS PUSH BUTTON, FLUSH MOUNTED
LARGE TOGGLE ENGRAVE "PUSH TO EXIT"
- BREAK GLASS EMERGENCY DOOR RELEASE

AUDIO VISUAL LEGEND

- FUTURE RECESSED MOUNTED PA SPEAKER
PROVIDE CABLING AND OUTLETS ONLY

SECURITY LEGEND

- SECURITY CONTROL PANEL
- DATA GATHERING PANEL
- SECURITY KEYPAD, REMOTE ARMING STATION
- MOVEMENT DETECTOR (PIR)
- DOOR CONTACT/REED SWITCH (MIN. 1 PER DOOR LEAF)
HD - HEAVY DUTY FOR ROLLER DOOR
- INTERNAL SECURITY SCREAMER
- SECURITY STROBE & SIREN
- SMOKE DETECTOR WIRED TO SECURITY SYSTEM
- HEAT DETECTOR WIRED TO SECURITY SYSTEM

MISCELLANEOUS LEGEND

- PERFORATED ELECTRICAL CABLE TRAY, SIZE AS NOTED.
[300] - INDICATES 300mm WIDE TRAY
- EXTRA LOW VOLTAGE CABLE TRAY, SIZE AS NOTED.
[300] - INDICATES 300mm WIDE TRAY

LIGHTING AND CEILING FAN VARIANTS

- CLn CONTINUOUS LINEAR LUMINAIRE
- En EMERGENCY LUMINAIRE
- Dn DOWNLIGHT
- Ln LINEAR LUMINAIRE
- PMn POLE MOUNTED LUMINAIRE
- Vn WALL LUMINAIRE

VARIANTS

- AB OUTLET MOUNTED ABOVE BENCH
- BCWU BOILING / CHILLED WATER UNIT
- CF COFFEE MACHINE
- CM DEVICE MOUNTED ON UNDERSIDE OF CEILING
- CSO COMBI STEAM OVEN
- CT COOKTOP
- CU CONDENSING UNIT
- DF DRINKING FOUNTAIN
- DW DISHWASHER
- EC EVAPORATIVE COOLER
- EF EXHAUST FAN
- F FRIDGE OUTLET MOUNTED AT 1600 AFF UOS
- FCU FAN COIL UNIT
- FR FRYER
- FZ FREEZER
- GD GRIDDLE
- GPO SINGLE SOCKET OUTLET
- GR GRILLE
- GW GLASSWASHER
- HWU HOT WATER UNIT
- HD HAND DRYER
- IC DENOTES DEVICE IN CEILING SPACE
- IK INSECT KILLER
- IM ICE MACHINE
- KEF KITCHEN EXHAUST FAN
- MAF MAKE-UP AIR FAN
- MW MICROWAVE
- DAF OUTSIDE AIR FAN
- OV OVEN
- PW PIE WARMER
- RG RANGE
- RH RANGEHOOD
- RO REVERSE OSMOSIS UNIT
- RM ROOF MOUNTED
- RS ROLLER SHUTTER
- ST SENSOR TAP
- TEF TOILET EXHAUST FAN
- UB DEVICE MOUNTED UNDER BENCH
- VF VENTILATION FAN
- WP WEATHERPROOF DEVICE IP65 RATED
- (E) EXISTING DEVICE TO REMAIN
- (R) EXISTING DEVICE TO BE REMOVED
- (R,R) EXISTING DEVICE TO BE REMOVED AND RELOCATED TO THE NEW POSITION.
- (S1) DENOTES PE CONTROLLED ON/OFF (DARK HOURS)
- (S2) DENOTES PE CONTROLLED ON/TIME CLOCK OFF (DARK HOURS)

SINGLE LINE LEGEND

- CIRCUIT BREAKER.
A = AMPS, B = # PHASES.
- COMBINED RCD / MCB (RCBO)
30mA RATED UNLESS NOTED OTHERWISE.
A = AMPS, B = # PHASES
- MOMENTARY ACTION PUSH-BUTTON SWITCH
- LOAD BREAK/FAULT MAKE ISOLATOR
- CONTACT NORMALLY OPEN
A = RELAY OR CONTACT NUMBER
- CONTACT NORMALLY CLOSED
A = RELAY OR CONTACT NUMBER
- THERMAL OVERLOAD CONTACT
- EMERGENCY STOP
- CURRENT TRANSFORMER
A = No. OF PHASES
- TERMINAL
- SURGE DIVERTER
- TIME SWITCH, REFER TO THE SPECIFICATION FOR FURTHER DETAILS
- PHOTO ELECTRIC SWITCH, REFER TO THE SPECIFICATION
- TRANSFORMER
- CONTACTOR COIL
No. = CONTACTOR NUMBER
- RELAY COIL
No. = RELAY NUMBER
- TIMER COIL
No. = TIMER NUMBER
- ANTI-CONDENSATION HEATER
- THERMOSTAT
- THREE PHASE CIRCUIT BREAKER WITH SEPARATE DIN RAIL MOUNTED RCD
- MEN LINK
- KWH METER COMPLETE WITH FUSES
- DIGITAL POWER ANALYSER
(REFER TO SPECIFICATION FOR SYSTEM REQUIREMENTS.)
- SINGLE PHASE LINE & NEUTRAL
- THREE PHASE LINE & NEUTRAL
- EARTH
- DIN RAIL MOUNTED INLINE SURGE FILTER

PRELIMINARY ISSUE
REFER TO REVISION COLUMN

REV	DATE	DESCRIPTION	CHECK
C	21/04/22	PRE-TENDER ISSUE	NP
B	29/03/22	DD ISSUE	NP
A	17/03/22	PRELIMINARY ISSUE	NP



Site Architecture Studio
Level 3, 56 William Street, Perth 6000 WA
T 08 9226 5661
mail@sitearchitecture.com.au | www.sitearchitecture.com.au



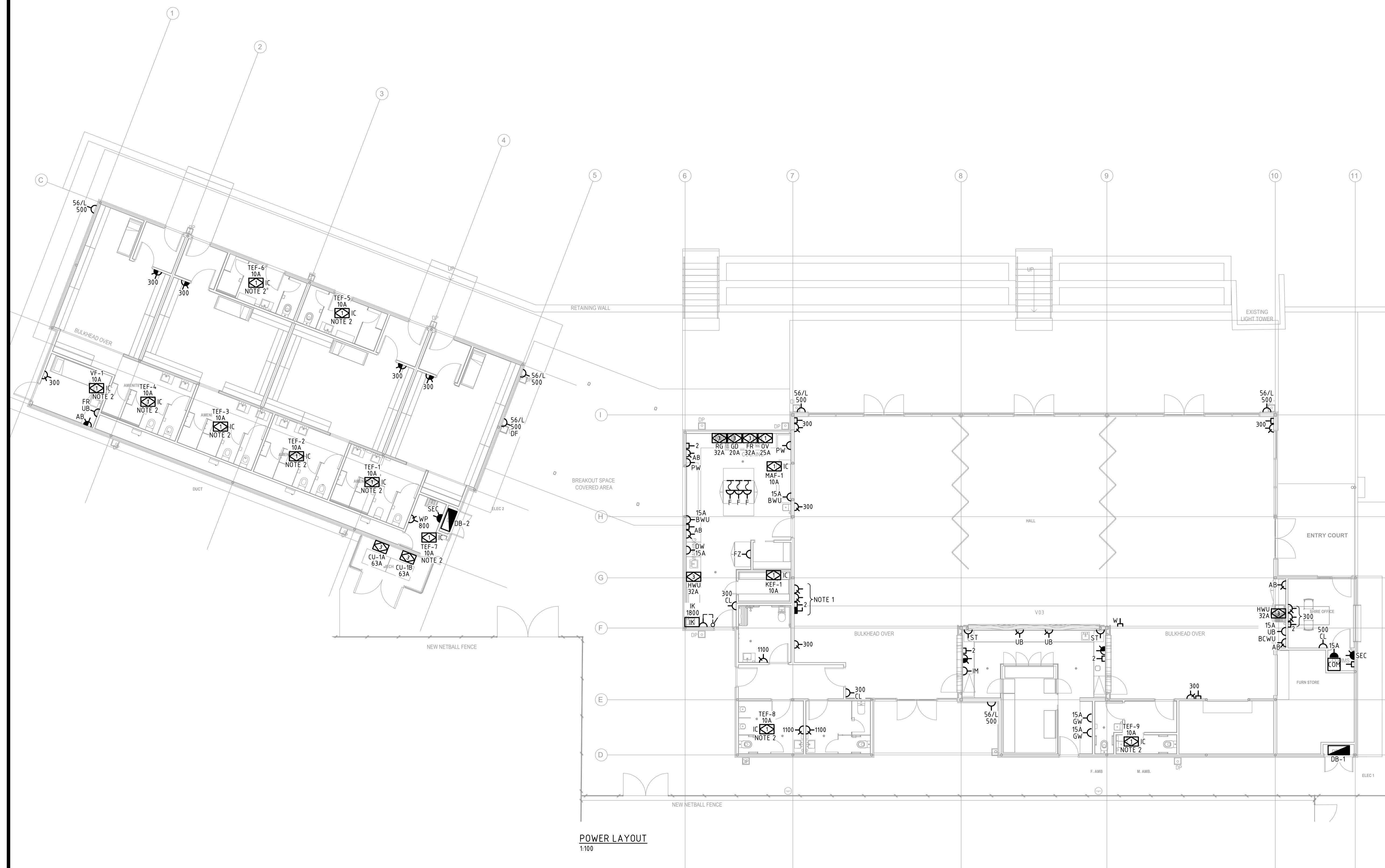
FOCUS CONSULTING WA
PO BOX 138, LEEDERVILLE WA 6007
E: info@focuswa.com.au
www.focuswa.com.au

MUCHEA RECREATION CENTRE
48 ARCHIBALD STREET, MUCHEA, WA, 6501
ELECTRICAL SERVICES
LEGEND

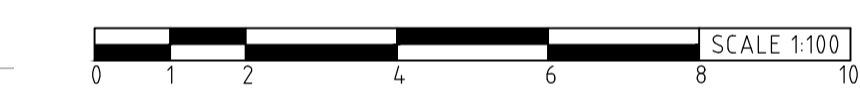
DRAWN	DESIGNED	SCALE	DRAWING No.
MR	FOCUS WA	N.T.S @ A1	E01 C
NP	DATE	MAR 2022	
APPROVED	PJ		
FOCUS CONSULTING WA PROJ No.	2021-162	PLOT DATE	21/04/2022

NOTES

1. OUTLETS MOUNTED BEHIND TV. LIAISE WITH AV CONTRACTOR FOR EXACT LOCATION AND MOUNTING HEIGHT.
2. EXHAUST FAN POWER SUPPLY TO BE CONTROLLED BY THE RESPECTIVE ROOM MOTION SENSOR. LIAISE WITH THE MECHANICAL CONTRACTOR TO CONFIRM EXACT LOCATION AND CONNECTION REQUIREMENTS.



POWER LAYOUT
1:100



PRELIMINARY ISSUE
REFER TO REVISION COLUMN

REV	DATE	DESCRIPTION	CHECK
C	21/04/22	PRE-TENDER ISSUE	NP
B	29/03/22	DD ISSUE	NP
A	17/03/22	PRELIMINARY ISSUE	NP

site
Site Architecture Studio
Level 3, 56 William Street, Perth 6000 WA
T 08 9226 5661
mail@sitearchitecture.com.au
www.sitearchitecture.com.au

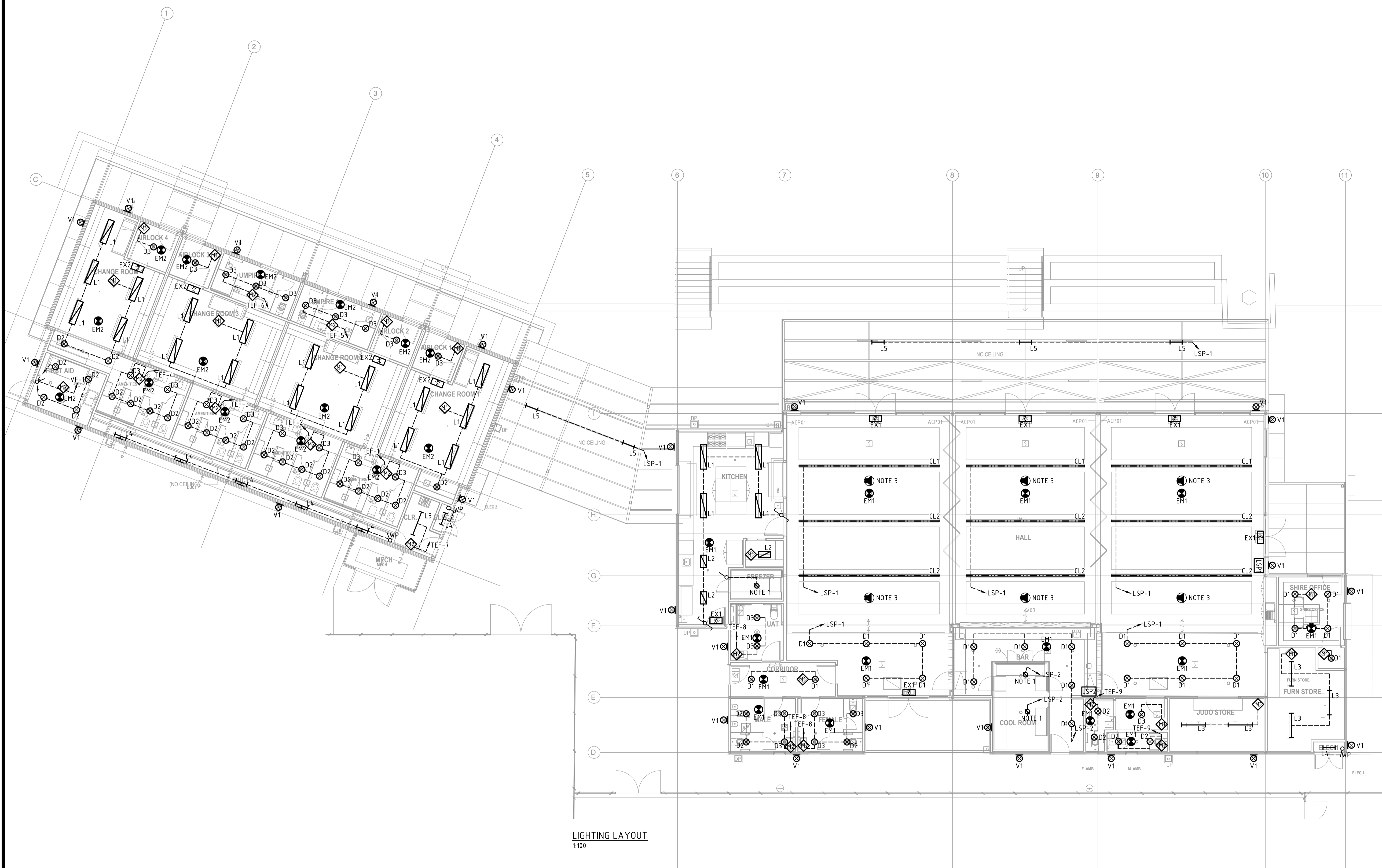
FOCUSWA
CONSULTING
FOCUS CONSULTING WA
PO BOX 138, LEEDERVILLE WA 6007
E: info@focuswa.com.au
www.focuswa.com.au

MUCHEA RECREATION CENTRE
48 ARCHIBALD STREET, MUCHEA, WA, 6501
ELECTRICAL SERVICES
POWER LAYOUT

DRAWN	MR	DESIGNED	FOCUS WA	DRAWING No.
CHECKED	NP	SCALE	1:100 @ A1	E04 ^C
APPROVED	PJ	DATE	MAR 2022	
FOCUS CONSULTING WA PROJ No.			2021-162	PLOT DATE
				21/04/2022

NOTES

1. PROVIDE A SWITCHED LIGHTING CIRCUIT AND CONNECT TO THE FREEZER, COOLROOM AND BOTTLE DISPLAY LIGHTING PROVIDED BY OTHERS.
2. PROVIDE 2 CHANNEL MOTION SENSORS FOR CONTROL OF EXHAUST FAN POWER SUPPLIES AS SHOWN. LIAISE WITH THE MECHANICAL CONTRACTOR TO CONFIRM EXACT LOCATION AND CONNECTION REQUIREMENTS.
3. LOCATION FOR FUTURE AUDIO SPEAKER. PROVIDE CABLING BETWEEN THE PROPOSED SPEAKER LOCATION AND THE COMMUNICATIONS RACK WITH 3m COILED AT EACH END FOR FUTURE SPEAKER INSTALLATION BY OTHERS.



PRELIMINARY ISSUE
REFER TO REVISION COLUMN

REV	DATE	DESCRIPTION	CHECK
C	21/04/22	PRE-TENDER ISSUE	NP
B	29/03/22	DD ISSUE	NP
A	17/03/22	PRELIMINARY ISSUE	NP

LIGHTING LAYOUT
1:100

site
Site Architecture Studio
Level 3, 56 William Street, Perth 6000 WA
T 08 9226 5661
mail@sitearchitecture.com.au | www.sitearchitecture.com.au

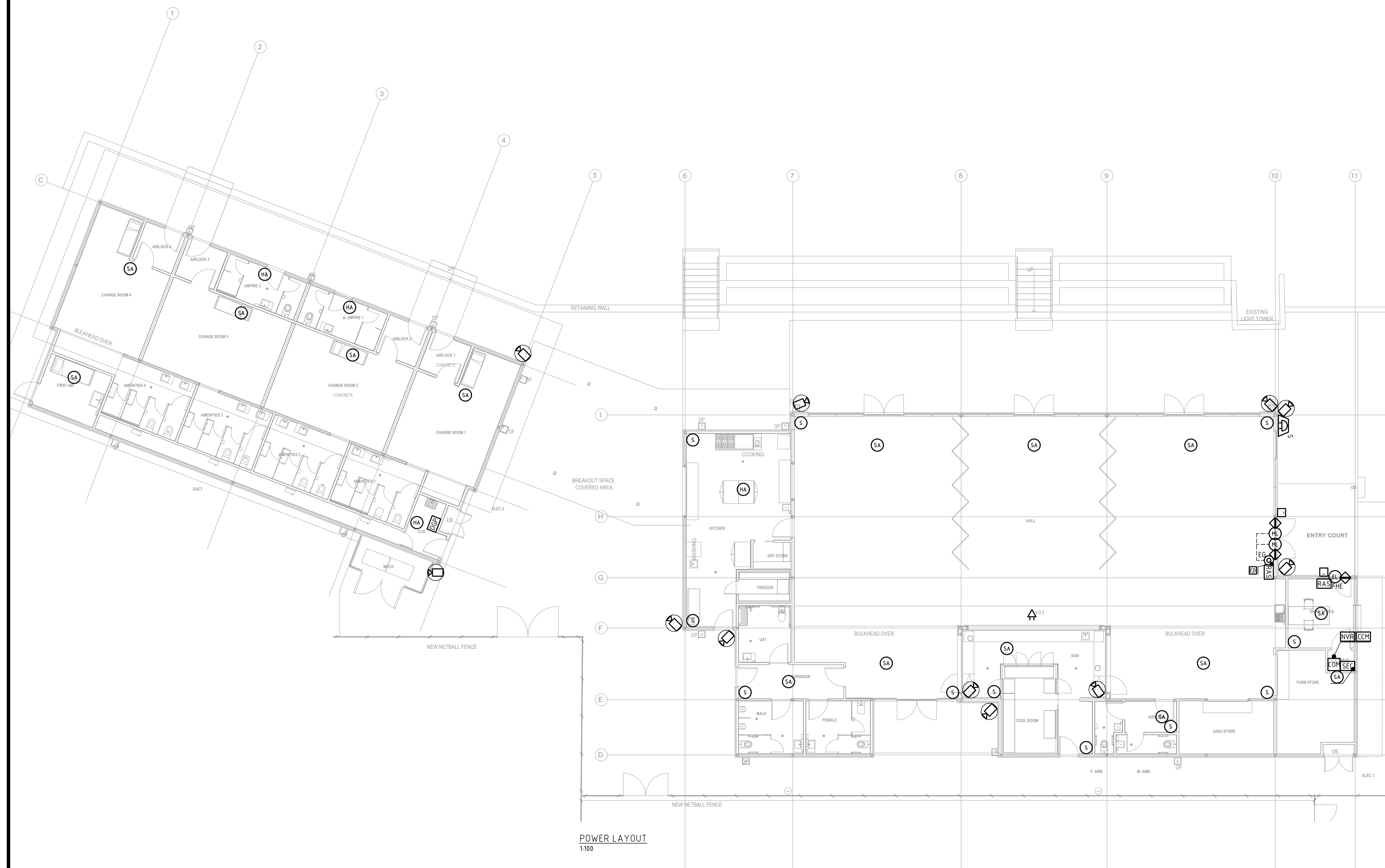
FOCUSWA CONSULTING
FOCUS CONSULTING WA
PO BOX 138, LEEDERVILLE WA 6007
E: info@focuswa.com.au
www.focuswa.com.au

MUCHEA RECREATION CENTRE
48 ARCHIBALD STREET, MUCHEA, WA, 6501
ELECTRICAL SERVICES
LIGHTING LAYOUT

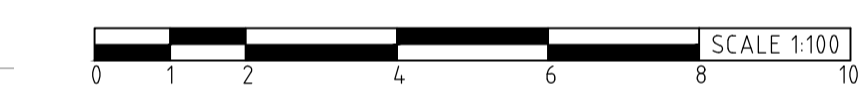
DRAWN	MR	DESIGNED	FOCUS WA	DRAWING No.
CHECKED	NP	SCALE	1:100 @ A1	E05 C
APPROVED	PJ	DATE	MAR 2022	
FOCUS CONSULTING WA PROJ No. 2021-162				PLOT DATE 21/04/2022

NOTES

1. OUTLETS MOUNTED BEHIND TV. LIAISE WITH AV CONTRACTOR FOR EXACT LOCATION AND MOUNTING HEIGHT.



POWER LAYOUT
1:100



PRELIMINARY ISSUE
REFER TO REVISION COLUMN

REV	DATE	DESCRIPTION	CHECK
A	21/04/22	PRE-TENDER ISSUE	NP

site
Site Architecture Studio
Level 3, 56 William Street, Perth 6000 WA
T 08 9226 5661
mail@sitearchitecture.com.au
www.sitearchitecture.com.au

FOCUS WA
CONSULTING
FOCUS CONSULTING WA
PO BOX 138, LEEDERVILLE WA 6007
E: info@focuswa.com.au
www.focuswa.com.au

MUCHEA RECREATION CENTRE
48 ARCHIBALD STREET, MUCHEA, WA, 6501
ELECTRICAL SERVICES
SECURITY LAYOUT

DRAWN	MR	DESIGNED	FOCUS WA	DRAWING No.
CHECKED	NP	SCALE	1:100 @ A1	E06 A
APPROVED	PJ	DATE	MAR 2022	
FOCUS CONSULTING WA PROJ No.			2021-162	PLOT DATE
				21/04/2022